

## CHAIRMANS COMMENTS by R. Francis

As this is the last newsletter in its current form, I thought our customers and shareholders would be interested in some facts about the society:-

C.C.F. is the only business in Wales which can offer livestock producers a choice of three main compound feeds, sourced from BOCMPauls, Wynnstay and H.J.Lea, as well as our own compounds, sold with fixed formulas and open pricing. This impressive range is further enhanced by a selection of straight feeds, and also blended feeds from either H.J. Lea in the north, or our own blending plant in the south, based at Glanrhyd near Cardigan. We are especially proud of Glanrhyd; this has grown from an idea two and a half years ago, to one of the top blending businesses in Wales, with further expansion and development in the pipeline.

Together with our "front of house" approach with compound feeds, we are also partners in Welsh Feed Producers at Carmarthen, operating a feed

mill supplying for the WFP sales force, besides our own "Centenary" brand, and contract manufacture for others. Our nutrition experts, Gordon Fairburn and David Evans, are on hand to offer advice and support to livestock farmers.

As part of WFP we have bought a 33.3% share of the Bibby Wales business, which operates as a stand-alone business. This helps to spread the overhead costs, at the same time ensuring our customers enjoy choice and competition.

We have also worked hard to establish a first class range of grass mixtures, which within two years have enabled us to become one of the two biggest suppliers of grass seed mixtures in Wales.

Our success with grass mixtures is closely followed by animal health products, where our product manager Karen Bevan has worked with colleagues to enable us to become one of the top three sellers in Wales.

On the fertiliser front we are proud to be the largest

supplier of Yara (previously Norsk Hydro) products in Wales and with our new colleague Richard Carlisle we are working hard to improve how we offer fertiliser and arable products, but perhaps more importantly how we can help our customers get better value for money.

With the growth of the many environmental schemes in operation, C.C.F. has become one of the country's top ten suppliers of gates and fencing equipment and we believe that we are able to offer more choice at competitive prices as a result.

We are currently investigating the potential for "crops for oil"; we are talking to relevant parties to determine whether, if this becomes a significant alternative, your society should take an active role.

Organisations like C.C.F. were created in times of hardship; when times are easier there is always a tendency for complacency to creep in

## GENERAL MANAGERS COMMENTS

This will be our last news letter in it's current form, we will be replacing it with a quarterly news letter in magazine form, which we hope will be more informative, whilst providing a link between our shareholders and the society.

Reading the farming press these days it seems the salvation of farming will be the ability to grow crops for fuel and pharmaceuticals, the expectation being that these crops will provide arable farmers with sustainable incomes and also be a source of cheaper by products for the livestock farmer. As a business we are currently looking to see if we have or should have a part to play in helping develop bio-fuel and are currently talking to interested parties.

Although it perhaps should be noted that by-products in the past have been relatively good buys, such as palm kernel are increasingly finding themselves being bought by power stations to fuel our power supplies.

I also read that quota

brokers are looking to see if we can easily sell and market our quotas outside of the U.K. and of course this, if true, poses the question will hard pressed farmers sell today and deny younger farmers in the U.K a chance of a market for tomorrow?

In July of this year if the E.E.C hold their nerve there could be good news for livestock farmers, with the implementation of percentage declaration of ingredients by percentage on compound feed tickets. This will mean buyers can assess value easier at point of purchase and can also keep an eye on changes through a season. The only regrettable part of the proposed change in legislation is that millers will be allowed a variation of 15% on each ingredient. So this would mean equal amounts of rape and soya, say at 8% inclusion each, could be declared at soya 9.2% and rape at 6.8%, giving an illusion of a better diet. From our perspective it would be sensible if the farming unions acted to stop this potential loophole misleading

it's members!

As I write these few comments our accounts are with our auditors and although we have again managed to make a trading profit in a difficult market, the future as for many of our customers looks increasingly tight.

In the next few weeks our accounts will be available for our shareholders and I would ask as many shareholders as possible to come to our AGM in the spring- we are your business, you do have a voice and it counts very much!

*Keith Gosney*

## Chairmans Views Continued

and I hope that the developments listed above will help to demonstrate that we are determined to sharpen the focus of this society; we can promise no more than we will work with increasing vigour to make this society relevant to our shareholders, but as always for the relationship to prosper, it has to work two ways.

*Richard Francis*

## MAIZE - THE BASICS

Below are a few notes about Maize for those thinking about growing it and a little reminder for the experts.

### Why grow maize?

- It is cheaper to grow than Grass (providing yields are reasonable)
  - Better feed quality
  - Animals perform better on a maize / maize – grass diet than just grass.
  - Produces better quality milk and beef that is required in today's markets.
- With increasing restrictions on farm manure, maize utilises manure so effectively.

### Can you grow Maize?

Maize can be grown

almost anywhere, but the following must be achievable and adhered to for a quality crop.

- A good seed bed is essential – to be ready by Mid April.
- A good soil structure which allows harvesting equipment to travel. i.e. NOT fields with potential water logging
- Grow away from strong winds, as this can cause dehydration of the crop. (i.e. away from the coast line)
- Choose the correct variety for the area it is to grow.
- Not over 40 inches of rainfall / annum

Don't grow on the mountains! Below 400 feet above sea level.

### How much should you grow? A guide

The figures below are a guide in acres and based on the following: 50 kgs of fed forage x no. of cows/beef x 200 days winter x inclusion level in the diet divided by the anticipated yield / acre. (16 tonnes). Acres of Maize to grow. A herd of 100 cows will need approx 57 acres of maize to feed at 90% inclusion.

Manure – you will need 2.5 acres to dispose of the manure produced by 4 cows. Therefore a 100 cows needs approx 62

Continues on pge 4

No. of Feeding cows	Inclusion rate 20%	Inclusion rate 30%	Inclusion rate 40%	Inclusion rate 50%	Inclusion rate 60%	Inclusion rate 70%	Inclusion rate 80%	Inclusion rate 90%
20	2.5	3.75	5	6.25	7.5	8.75	10	11.25
30	3.75	5.6	7.5	9.4	11.25	13.12	15	16.87
40	5	7.5	10	12.5	15	17.5	20	22.5
50	6.25	9.4	12.5	15.6	18.75	21.87	25	28.12
60	7.5	11.25	15	18.75	22.5	26.25	30	33.75
70	8.75	13.1	17.5	21.87	26.25	31.25	35	39.37
80	10	15	20	25	30	35	40	45
90	11.25	16.9	22.5	28.2	34	39.37	45	50.62
100	12.5	18.75	25	31.25	37.5	43.75	50	56.25

## MAIZE - THE BASICS (continued)

acres to get rid of the manure.

**Therefore the yield to feed and the acres to dispose are very similar – perfect situation.**

### Will maize fit into the rotation?

In a cereal rotation – winter wheat can be sown very easily after harvest.

On stock farms – grass can be sown behind maize, (Italian or perennial); this gives the grass an excellent start, as there is plenty of fertility.

Or maize can follow maize.

### Fertiliser Usage – simple approach

Phosphate : 50/75kgs/acre – with maize drilling – “down the spout” only. Use MAP (12.52.0) or DAP (18.46.0) Phosphate is very important to the growing crop  
Potash: 50kgs / acre of MOP. Crucial to sugar production, early maturity, and draught resistance.

Nitrogen: Mostly comes from the manure, if not use bagged AN.

### Weed problems

The maize crop cannot tolerate weed competition. Ensure a weed free crop. (I will advise chemicals if you want to know more)

### Seed rates/drilling widths.

Seed rates are talked about a lot; however the seed rates are normally 40-45,000 seeds per acre.

Drilling distance between rows is normally 75cms.

### Harvesting.

Aim for end September harvest. Weather can affect harvest timings by 2 weeks either way.

The grain should be a dark yellowy/orange colour. Break cob in half and squeeze a grain between thumb and finger. If a tiny bit of liquid is seen, then it is ready to harvest. If milk squirts out, it is not ready to harvest, if grain is hard and no liquid is released, then it is a little too mature. This procedure comes with practice!

### Varieties

A lot of hot air is spoken about maize varieties, often from people who know very little about maize, also from people who have varieties that are out dated but think they can make some money for themselves!! Cynical perhaps but true.

The No 1 rule “choose varieties from the First Choice NIAB list ONLY.”

Any variety on the NIAB'S second choice or not on any NIAB list should be ignored – they have been superseded.

The 2<sup>nd</sup> Rule: Choose a variety to suit your needs (not the salesman's)

These are the most important points to consider:

Maturity Class: As a guide, Choose a Variety with a Maturity of 7 and over.

Yield: Both bulk and Starch yield. Choose a variety that has some of both.

Standing Power: Make

## GRASSLAND NEWS (continued)

TOTAL £44.30 +  
£12.30 = £ 56.60

A saving of  
£10/acre

The same costings can be applied to all situations including cutting, where FYM is used, where indices need correcting.

Here we have saved £ 10/acre, but supplying exactly the same amount of plant nutrient.

I realise there may be some doubts over Urea, but there should not be, this much of Wales is suited ideally for urea, e.g. plenty of moisture, right through to June. Works better in cooler weather, therefore ability to get fertiliser

(N) onto the ground earlier without the worry of leaching, giving you more time. Less product to store. Does not cause the acidity Ammonium Nitrate does to the soils (this includes compounds).

Having said all the above, either method is pointless if pH levels are not monitored. If your pH levels fall below 5.8 the plant's ability to use these nutrients is vastly reduced. (@ pH of 5.4 approx 50% of fertiliser will not be utilised!!)

With the introduction of Granular lime (36 metre spread capability) which can be used

at anytime of year and is made available in the same growing season. (Ordinary lime at 2t/acre can take 2 years to take effect)

Small areas can be treated accurately, saving time and money.

With the increase in price of quarried lime, Granular lime really is cost effective, and you are in control of the application, not a contractor.

If you have any questions or queries, or even disagree, I will be more than happy to help and discuss in anyway I can. Call Richard Carlisle 07970002189.

### Mr John Thomas cc President CCF Ltd

It is with sadness and regret that we have learnt of the death of our President, Mr John Thomas who passed away on Sunday 5th February. John has been an exemplary

President of the Society and will be much missed. Whilst many words can be used to describe him, perhaps the best epitaph would be "He was a thoroughly decent

human being" and our thoughts and prayers are very much with his family at this time.

## MAIZE - THE BASICS (continued)

sure it stands up!!

Early Vigour: Make sure it gets away well, especially in marginal areas. Essential if growing under plastic.

CCF has secured 2 of the best varieties on the NIAB list, specifically for this area:

Kroesus: The highest

yielding, starch producing variety on the NIAB list: 9 for Vigour. For the farmer who needs yield and farms in a favourable growing area.

Sparticus: A very early maturing variety with yield and High starch content.

For those who needs

the forage off early, and possibly not growing in the most suited area.

The above are the very basics, if you require any more information please call.

Richard Carlisle  
07970002189

## GRASSLAND NEWS

As last month, those who have not purchased fertiliser, really should get it covered, not only are you risking further price increases, but will face availability problems. Everyone will want it all at once, and this will cause huge logistic problems. One manufacturing breakdown in the UK will cause chaos in the UK. Last season was hard enough with Nitrogen supply.

A closer look now at fertiliser programmes and attention to detail will pay dividends in producing good quality grass at possibly a cheaper cost per acre.

For example:

A fairly intensive  
Grazing system with  
no FYM/Slurry

Assuming Phosphate and Potash levels are OK (Index 2 or above)

Traditional method  
27.5.5 Compound.@  
approx £ 165 / tonne  
100 kgs/acre per  
month from March -  
June.

(2 bags / acre per  
month from March -  
June)

This supplies 216 units  
of Nitrogen 40 Units  
Phosphate and 40  
units of Potash.

Cost : £ 66 / acre

Another method.

0.24:24 = approx £  
145/tonne. Urea =  
approx £189/tonne

Apply Phosphate and  
Potash in the autumn  
0.24:24 @ 85 kgs / acre  
(approx 1.5bags/acre)  
This applies 40units of  
Phosphate and 40 units  
of Potash (as above)  
This costs approx £  
12.30/acre.

Then apply Granular  
urea @ 58kgs/acre /  
month from March -  
June

This supplies 216 units  
of Nitrogen / acre (as  
above)

This costs £ 44.30/ acre

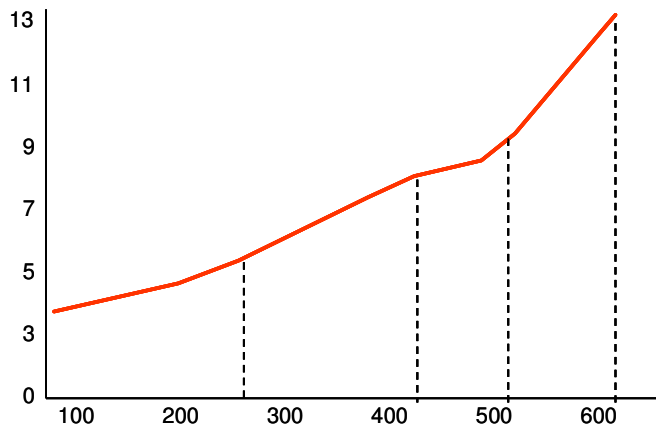
Continues on page 6

## NEWS FROM BOCM PAULS

Younger and Faster' is the blueprint being talked about by BOCM PAULS Account Managers when it comes to rearing beef animals without direct subsidies. But what does this actually mean in practical terms on the farm. When the key to profitability is in reducing the costs of

possible after birth the young animal converts the feed into growth better than at any other time in its life. Prime Beef Grower is a high energy, 16% protein feed that is designed to develop the animals frame so that it can be finished easily later on. Levucell is

TB testing for every animal over 15 months it makes more sense to finish the animals on the farm of birth. BOCM PAULS Prime Grade, again including Levucell, is the ideal finishing feed. It is a very high energy, high starch finishing ration that will give growth rates of up to 1.5kg per day. Today's beef industry requires more performance orientated management and BOCM PAULS 'Younger and Faster' will help to achieve this.

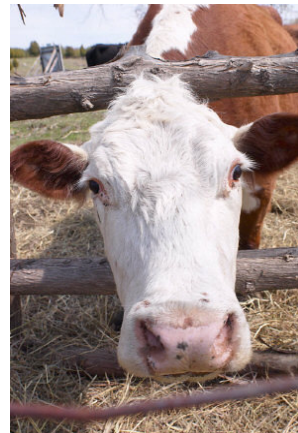


production, reducing slaughter age and improving feed conversion efficiency is paramount. The time when a beef animal converts feed to meat most effectively is when they are younger and this is the time to feed.

By creep feeding with BOCM PAULS Prime Beef Grower as soon as

included in Prime Beef Grower to improve feed conversion and growth rates by an extra 10%. Levucell is a yeast that has been specially developed for feeding to ruminants to encourage better rumen digestion.

With the threat of compulsory pre-movement



## NEW PRODUCT — LONG ACTIVE CYDECTIN INJECTION FOR CATTLE

One treatment of New Cydectin Long Acting Cattle injection helps worm control throughout the grazing season, based on a set stocking system.

Cydectin's active ingredient—Moxidectin is completely different to Avermectins due to two main points:-

- 1) Potency - Moxidectin has the highest potency— eg Against unselected *Ostertagia circumcincta*, the LD95 (Lethal death of 95% of parasite) for ivermectin is around 22mg/kg, compared with 4.7 mg/kg for moxidectin - ALMOST A FIVE FOLD DIFFERENCE (Shoop et al., 1993)
- 2) Persistency— Moxidectin benefits from a chain within the structure which is responsible for the lipophilic nature (fat-loving) of the chemical. Moxidectin is absorbed into the blood and starts killing internal and

external parasites. The lipophilic nature of Moxidectin means a high percentage of the chemical will be absorbed by the body fat and released back into the bloodstream over several weeks and continue to kill the parasites.

Benefits of Cydectin LA include:-

1. New technology in Cydectin 10% LA means moxidectin spreads throughout the body extremely efficiently and the high absorption by the body fat gives the long persistency.
2. The moxidectin

in Cydectin LA is 10g/100ml - by comparison Cydectin Cattle Pour On is 0.5g/100ml.

3. A single injection at turnout gives up to 150 days persistency on stomach worms and 120 days persistency against lungworm and 133 days persistency against sucking lice.

4. Long persistency means pasture contamination is reduced

5. Easier to administer than a bolus— A single injection given subcut. at the base of the ear at a rate of 1ml per 100kg liveweight.

6. Cheaper than boluses and can be used in cattle from 100kg— 500kg

For further information contact your nearest branch

**SPECIAL OFFER**

**BUY 2 X 20lt**

**DEOSAN TC86 and  
get 3rd drum FREE**

## CLASSIFIED ADVERTISEMENTS

### FOR SALE LIVESTOCK

**PEDIGREE WELSH** black organic bull. Certified Johne's free. 21 months from closed organic herd. Good temperament and halter led.

TEL: 01766 762608

**PEDIGREE RAM**— Poll Dorset ARR/ARR. Born 3.11.03

TEL: 01834 812664

**2 TAMWORTH X GILTS**

Good natured. Well grown. Ready for boar.

£250 the pair

TEL: 01834 831381

**HIGHLAND CATTLE**

Please telephone for details.

TEL: 01545 570680

**TOP QUALITY PEDI-**gree limousin bulls.

John Hayman

TEL: 01646 600352

**YOUNG HEREFORD** bulls.

TEL: 01239 612785

07980 470184

**PEDIGREE TEXEL**

yearling ewes. MV accredited and scrapie tested. Scanned in lamb to a group 1 ram.

TEL: 01650 511306

### MISC

**SMALL BALE HAY.**

Organic big bale straw.

2 x full size lamb creep feeder. 1 x half size lamb creep feeder.

TEL: 01239 621871

**SMALL BALES OF**

meadow hay. £2/bale

TEL: 01239 831267

**BIG BALE SILAGE.**

TEL: 01437 563268

**QUALITY WILTED**

big bale silage. £12/bale

Own collection.

TEL: 01239 614213

**MITSUBUSHI SHO-**

**GUN 2.5 Turbo Diesel**

D Reg. Ideal farm/off roader use. Good runner, tyres as new.

TEL: 01545 570680

**10 x 5 CATTLE FEED**

rack and big bale sheep feeder.

TEL: 01239 621676 or 07890 019649

**BIG BALE HAYLAGE** - good quality triple wrapped. Near Plwmp.

TEL: 01545 580618

**BATEMAN CATTLE**

weigh crush in excellent condition.

TEL: 01239 851621 or 07774 403902

### WANTED

**SHOW JUMPS.** Must be in good condition.

TEL: 01834 831281 after 8pm

**GALVANISED CATTLE** crush. Must be in good condition.

TEL: 07968 506673

**ARABLE WEED SEED.**

Red shank, charlock, fat hen, wild oats. Mr Owen.

TEL: 01974 251 623

## SUPAVERM HELPS OVERCOME FLUKE PROBLEMS IN SHEEP

**It's a harsh fact of life for UK sheep farmers and the vets who advise them – fluke is a challenge from much earlier in the year than it used to be. Trials carried out by Janssen Animal Health show that fluke is now a threat throughout the summer.**

Warmer/shorter winters, on average, are the reason. They are failing to kill-off as many mud snails, the hosts that link sheep with this economically debilitating complaint. Summer is also the time when roundworms are present, which is another serious attack on animal growth, farm production and profits.

The Janssen Animal Health trials and commercial experience have proved the effectiveness of treating sheep with Supaverm, the broadest spectrum combination fluke and worm control drench. The active ingredients are closantel and mebendazole.

The product has a proven track record – sheep farmers have used over 84 million doses of Supaverm in the last 15 years.

Closantel kills immature fluke as well as adults. Also, it has been shown in published

articles (Vet.Rec.1990) that its residual action stunts early immature fluke, and less movement means less damage to sheep livers. Closantel also stays active against egg laying for 20% longer than triclabendazole and can be used all year round on all risk levels of farms.

Resistance to triclabendazole has been recorded in parts of Scotland, Wales and Northern Ireland. It is not known to what extent this resistance will spread into other areas of the UK. But the problem will only get worse if farmers do not act now, by using Supaverm or at least incorporating it into a rotation programme with triclabendazole. Without action, resistance is likely to escalate into a major challenge for UK agriculture. There are areas of the UK where sheep production would be impossible without the use of a flukicide, which underlines the point.

Sheep can be treated with Supaverm throughout the year. The level of pasture contamination, weather conditions and geographic location will determine the interval between doses. Generally, treatment intervals of 10-12 weeks throughout the fluke season, September to March, are

recommended in low infection areas. More frequent dosing may be required in severe fluke seasons.

Giving ewes a single dose of Supaverm midspring will help to reduce pasture contamination in the following grazing season. It's also important for farmers to recognise that sheep brought in from fluke areas should be dosed before they join the flock. Vets can also help by urging farmers to weigh sheep so they can administer the correct dose.

Losses from fluke can easily add up to more than £900 per 100 ewes. Supaverm treatment stops egg-laying for 13 weeks, effectively lowering infestations in sheep and reducing contamination of pastures.

## SPECIAL OFFER

**£'s off Lambwena Pellets**

**BOCM PAULS lambwena pellets when bought on contract with BOCM Prestige or Store Lamb pellets offers you a discount of:-**

**£12/tonne on bags (Minimum 1 tonne delivered)**

**£6/tonne on bulk (Minimum 3 tonnes)**

**OFFER ONLY APPLIES ON SIGNED CONTRACTS FOR FEBRUARY—MAY DELIVERIES**

## SPECIAL OFFER

**BUY 2 X 20lt**

**DEOSAN  
SPRAYLENE and get  
3rd drum FREE**